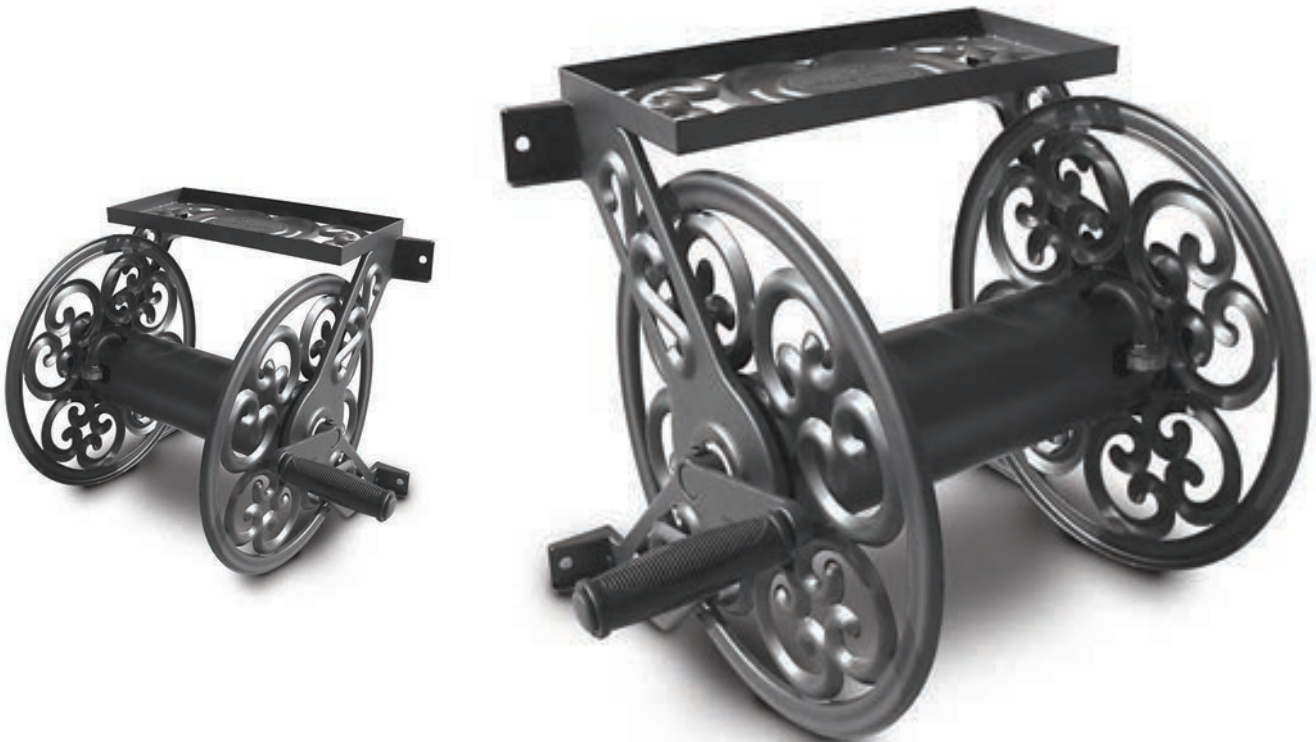




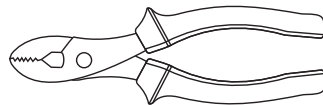
Handle Reversal on the Model 708 Decorative Hose Reel



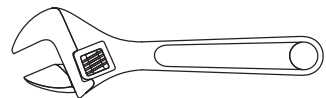
TOOLS REQUIRED:



Allen wrench



Pliers



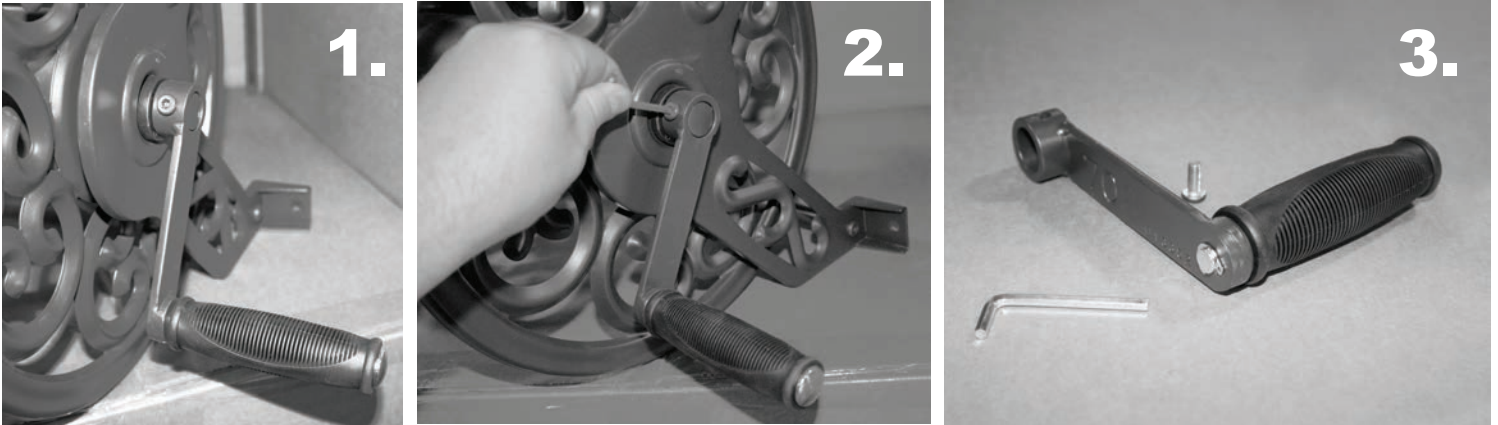
Adjustable wrench

Estimated Assembly Time : 5 Minutes

Reversing the Hose Spool

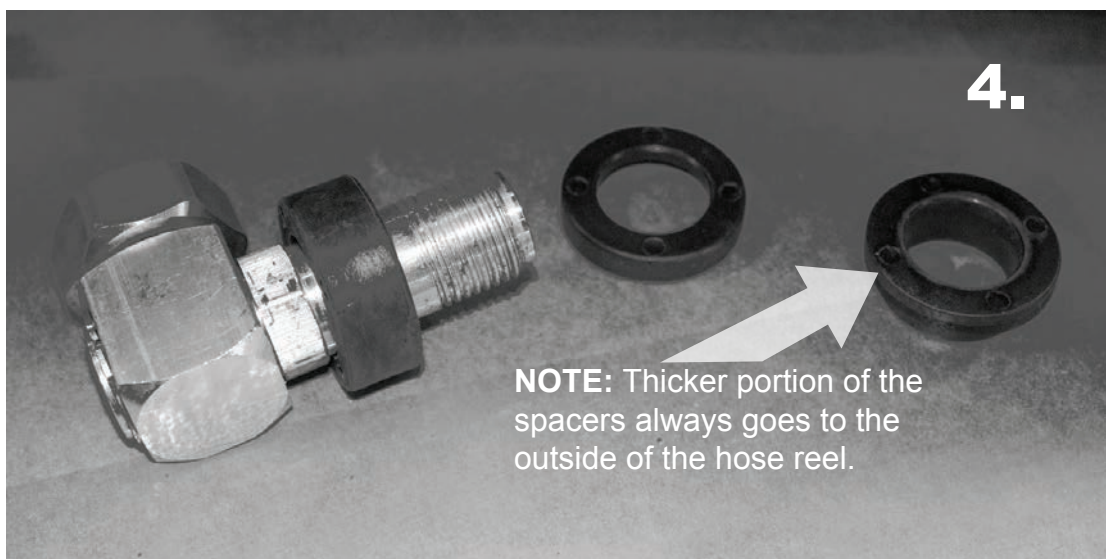
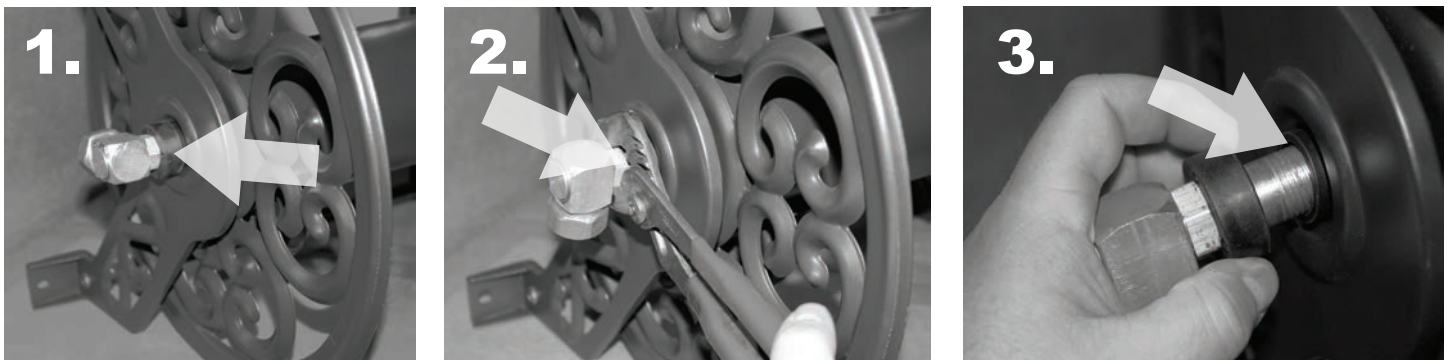
Step 1: Remove Handle

Use the Allen wrench to loosen and remove the Allen screw and handle.



Step 2: Remove Swivel

Use a pair of pliers or adjustable wrench to loosen and remove the swivel and plastic spacers.

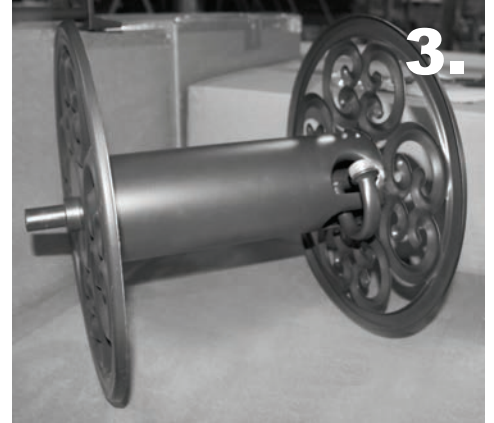
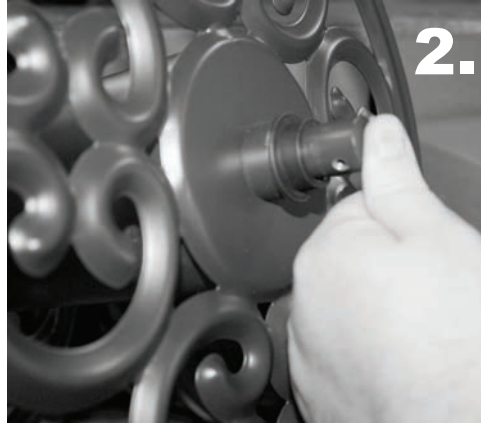
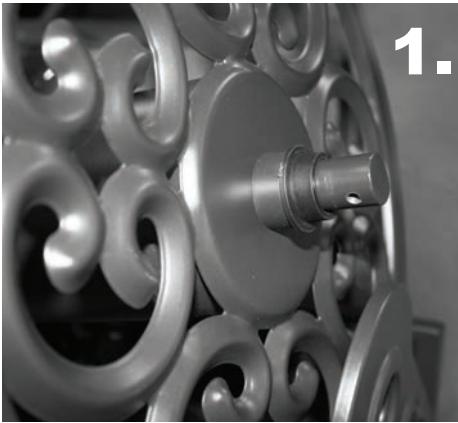


NOTE: Thicker portion of the spacers always goes to the outside of the hose reel.

Reversing the Hose Spool

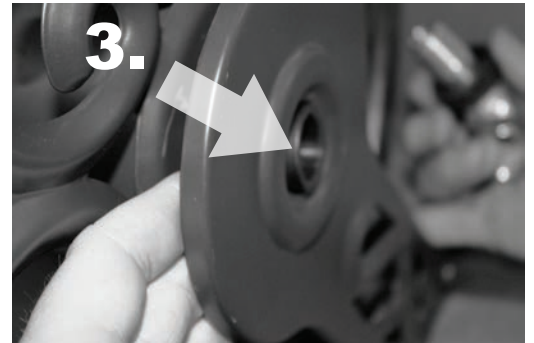
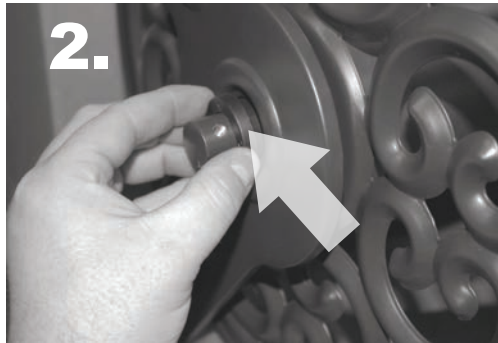
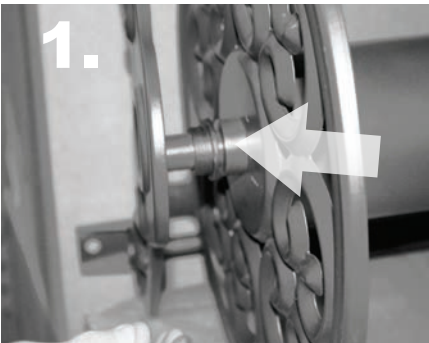
Step 3: Removing Hose Spool

Using pressure from your fingers push in on the spool end and pry the hose reel frame slightly apart until spool is removed. (**CAUTION:** Do not pry use a prybar or large screwdriver to separate. This will damage and possible bend the hose reel frame.)



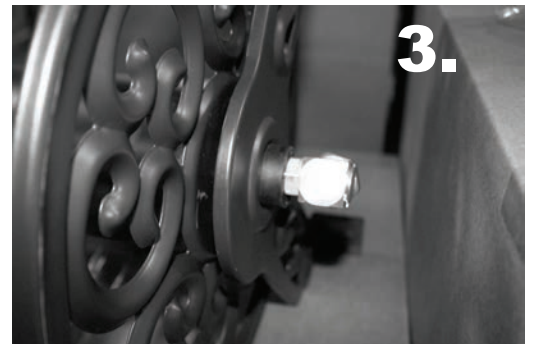
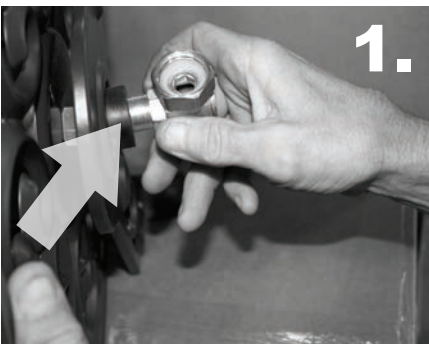
Step 4: Reversing the Hose Spool

Reverse the plastic spacers on the opposite ends of the hose reel. Using your fingers hold spacers in place. Slide and lock the the hose spool back in position.



Step 5: Reattaching the swivel

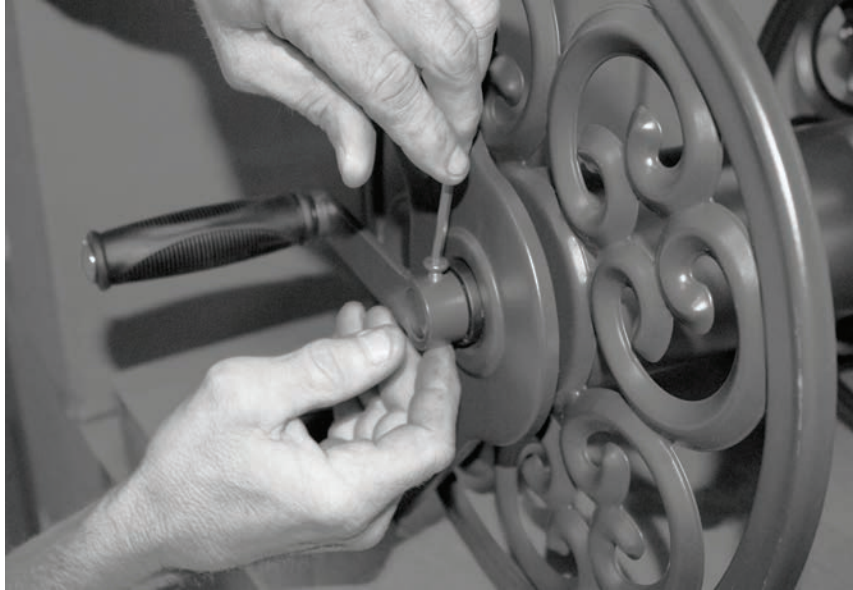
Add spacer over swivel. Align swivel threads and hand tighten. Tighten down swivel with pliers or adjustable wrench until snug. (**CAUTION:** Do not over tighten swivel.)



Reversing the Hose Spool

Step 6: Replacing handle

Slide the plastic spacer on spool shaft then attach handle. Align the holes on the spool end with the handle and insert Allen screw. Tighten down handle with Allen wrench.



NOTE: Garden hose will have to roll up in the opposite direction.